



## MRCI Report on Undocumented Migrants in Ireland

**November 2011**

### Summary

Information regarding undocumented migrants is extremely limited. The following MRCI report provides some qualitative and quantitative data on a significant number of undocumented migrants in Ireland. Section 1 provides basic information on 1,250 undocumented individuals seeking assistance from the MRCI over the past two years. Section 2 presents the findings from a survey of 100 undocumented migrants conducted by the MRCI in June and July 2011.

According to MRCI case work and survey data, undocumented migrants constitute a diverse group from a wide range of non-EU nationalities living in virtually every county in Ireland. The majority are over 30 years of age and have been living and working in Ireland for several years. Undocumented migrants are more likely to be men than women although there are significant numbers of women. Most are engaged in some form of employment in the state, typically in more informal job sectors such as restaurants and domestic work, and are living on very meagre incomes. Many have been with the same employer for several years and, interestingly, many pay income tax and PRSI contributions through their employment. Approximately half of the undocumented migrant population have spouses and/or young children living with them and almost all intend to remain living and working in Ireland.

### Section 1: Data on Undocumented Migrants from MRCI's Case Management System

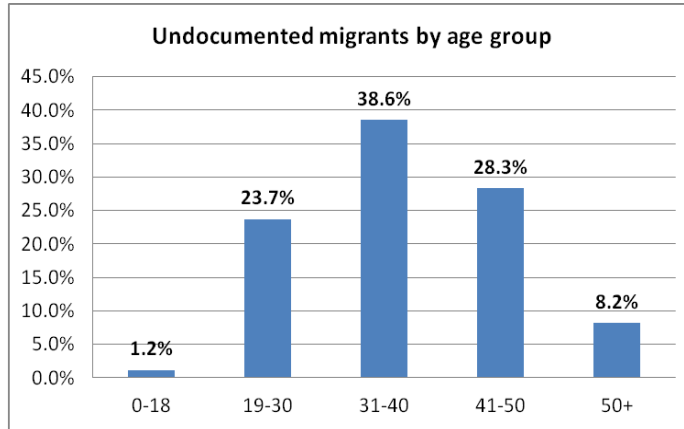
MRCI's Case Management System (CMS) captures information from individual migrants that access MRCI's Drop in Centre. In the two year period between July 2009 to July 2011, 1,250 undocumented migrants attended the MRCI for information and support. The information gathered from these individuals shows the following trends regarding nationality, gender, age, years in Ireland, county of residence and job sector.

**Nationality:** Undocumented migrants originated from over 75 nationalities. Philippines, China, Ukraine, Pakistan, Moldova, Brazil, Bangladesh, Mauritius and South Africa represented the largest groups respectively.

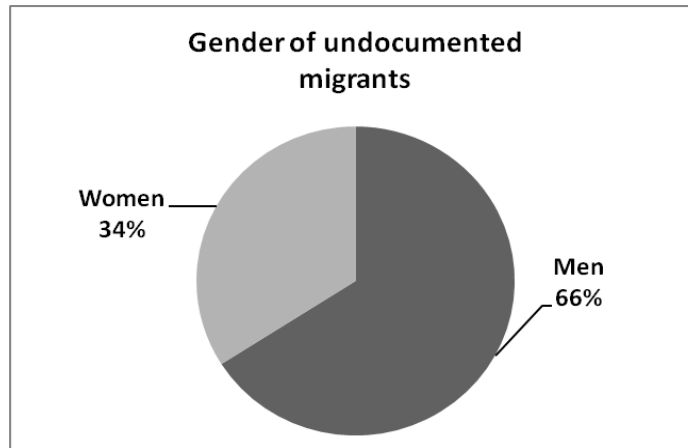
Country	Percentage
Philippines	16.9%
China	13.7%
Ukraine	8.3%
Pakistan	6.1%
Moldova	5.9%
Brazil	5.2%
Bangladesh	4.4%
Mauritius	3.8%
South Africa	3.0%
68 Others	32.7%



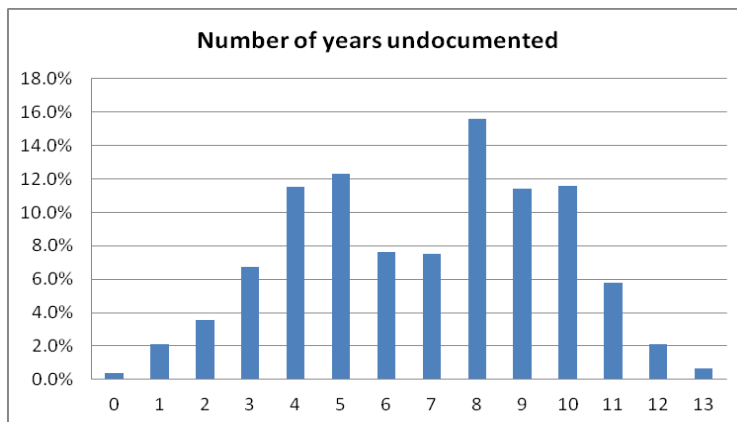
**Age:** The average age of undocumented persons was 37 years. This was the same for both women and men. 75% are over the age of 30. The largest group of undocumented migrants were between the ages of 31-40.



**Gender:** 34% of undocumented migrants were women and 66% were men.



**Number of Years in Ireland:** The following charts the number of years migrants have been undocumented in Ireland which ranges between 0-13 years. 87% of undocumented migrants were in Ireland for 4 or more years.





**County of Residence:** Undocumented migrants came from all 26 counties in Ireland. The highest numbers were from counties Dublin, Kildare, Galway, Cork and Wicklow.

County	Percentage
Dublin	73.2%
Kildare	4.6%
Galway	3.6%
Cork	2.7%
Wicklow	1.7%
Limerick	1.3%
Other 20 counties	12.9%

**Job Sector:** The following chart indicates the sectors where most undocumented migrants were working. Most notable sectors include the restaurant and catering sector, domestic work and cleaning.

Job Sector	Percentage
Restaurant and catering	34.0%
Domestic work	15.1%
Cleaning & Maintenance	6.6%
Construction	6.4%
Shop and retail	5.8%
Manufacturing	3.2%
Medical and healthcare	3.2%
Agriculture	2.9%
Transport	2.2%
Security services	1.4%
All other sectors	19.3%



## Section 2: MRCI Survey of Undocumented Migrants

To obtain additional data in relation to family situation including children, employment, taxation and plans for the future, MRCI undertook a random sample survey of 100 undocumented migrants who are in contact with us. This was carried out in the summer of 2011.

### ***Family and Children***

- 43% of those surveyed indicated they were married. Of those who were married, 62% indicated that they live with their spouse in Ireland.
- 58% of respondents indicated that they have children under the age of 18. 4% indicated having 4 or more children.
- 35% of respondents have some or all of their children living with them in Ireland. Significantly, there are 52 children in total among these respondents. Of these 52 children, 14 attend either pre-school or primary school and 10 attend secondary school and the remainder were preschool age.
- Of the respondents who indicated having children, 50% have children who were born in Ireland representing a total of 44 children.

### ***Employment and taxation***

- 85% of all of those surveyed were in some form of employment in the state. The following provides a breakdown on the employment whether it was full-time, part-time, self-employed or unemployed.

Employment Status	Percentage
Full-time	37%
Part-time	45%
Self-employed	3%
Providing childcare at home	4%
Unemployed	11%

- Of those in employment, 64% have been in the same employment for over 2 years and 21% have been in the same employment for 5 years or more.
- 66% of those surveyed indicated that they had paid income tax and PRSI contributions at some stage during their employment in Ireland. 48% indicated that their employers were currently paying income taxes and PRSI contributions.
- Of those who have a spouse with them in Ireland, 27.5% were providing childcare in the home and 57% were in employment. Of these, 81% were in the same job for over 2 years and 27% were in the same job for more than 5 years.
- 52% of respondents had an income of less than €300 per week. 33% were families with children including one family with four children who had an income of less than €200 per week.

### ***Plans for the Future***

- 95% of those surveyed stated that they intended to remain living and working in Ireland.